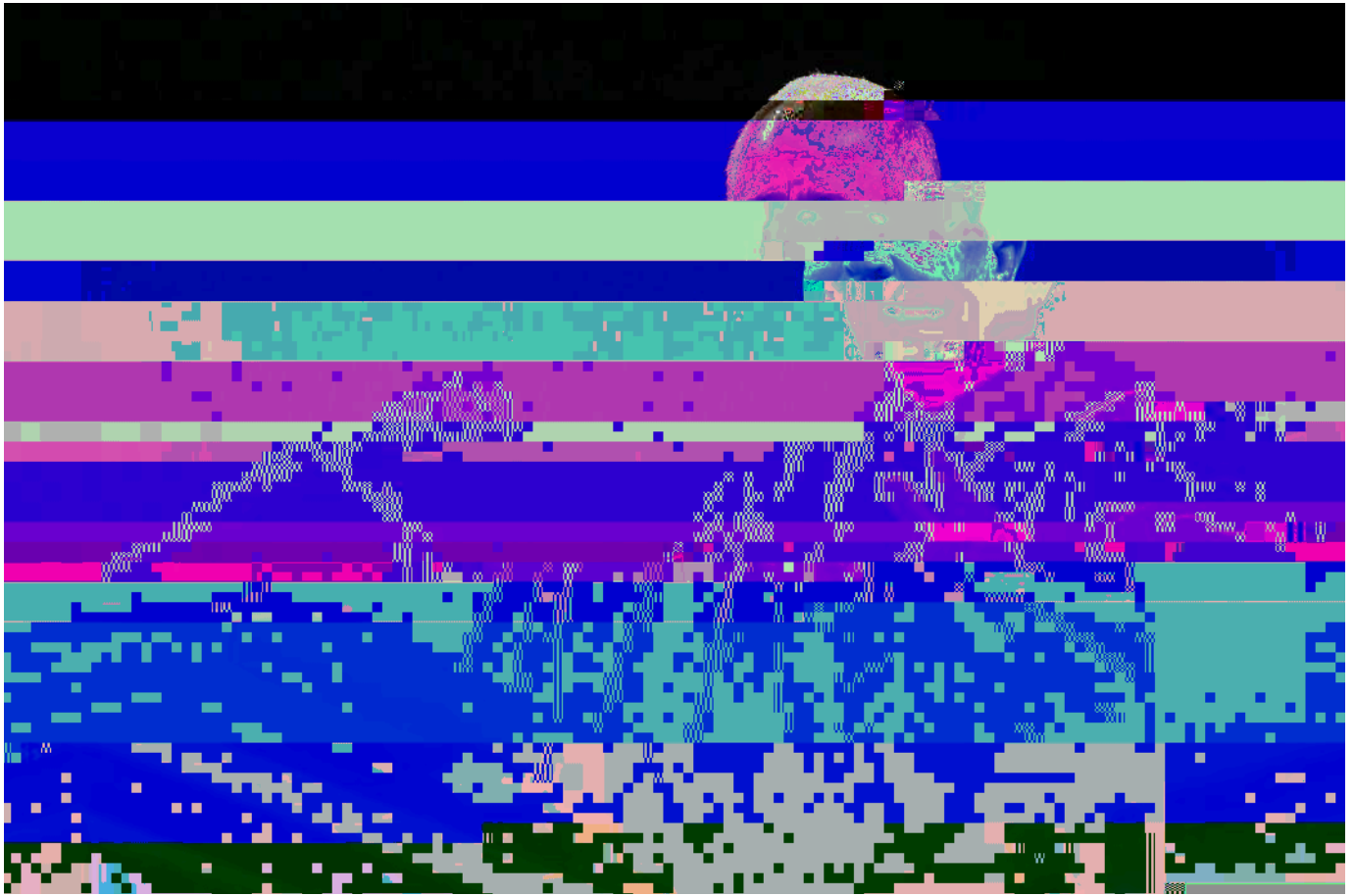




1875
a a a a a
a A.B., *cum laude*,

W

a a
- j , a ;
a a , a a a , a a
a a C A a
a a a
a a a ,
a a
a a a
a , a a
a a



a . . . a a . . . a , . . . a a a a a a a . . .
a . . . a , . . . a a . . . a . . . a , C a
a ' a a . . . , . . . a a . . . a . . . a . . . a
a a . . . a ' . . . a a . . . a . . .
a a a . . . a , . . . a a a . . . a a . . . a
a . . . a a . . . a a a . . . a . . .
a . . . a a . . . a a . . . a . . .
a . . . a . . . a . . . a . . . a . . .
a . . . a a a . . . , . . . a . . . a
a . . . a . . . a a . . . a . . . a . . .
a a a . . . a . . . a a . . . a . . .
a a ; . . . ' a . . . a . . . a . . .
a . . . a . . . a . . . a . . . a . . .
a . . . a C a . . . a . . . a . . . a . . .
a . . . a , . . . a . . . a a a . . .
a . . . a . . . a . . . a . . . a a . . .
a , a a . . . a a a a a . . . a . . .
a . . . a a a . . . a . . . a . . .

Northern Kentucky University
President Geoffrey S. Mearns
has Unique Perspective on
Legal Education and the Legal
Profession

N

Chase was a trailblazer

a
a a
a a
a
, a
a
a a
, a

THE CHALLENGE OF CONSTITUTIONAL INTERPRETATION

The Constitution of the United States is a document of extraordinary importance and significance. It is the supreme law of the land, and its interpretation is a task of great difficulty and responsibility. The framers of the Constitution intended it to be a living document, one that could adapt to the changing needs and circumstances of the nation over time. This has led to a rich and complex history of constitutional interpretation, with many different theories and methods being developed and debated over the years.

One of the most important and controversial issues in constitutional interpretation is the question of the role of the courts. Some believe that the courts should strictly interpret the text of the Constitution, while others believe that they should also take into account the original intent of the framers, and still others believe that the courts should be more flexible and responsive to the needs of the nation. This debate is ongoing, and it is likely to continue for many years to come.

Another important issue in constitutional interpretation is the question of the separation of powers. The Constitution divides the government into three branches: the executive, the legislative, and the judicial. Each branch has its own distinct powers and responsibilities, and it is important to ensure that these powers are exercised in a way that respects the boundaries of each branch. This is a delicate task, and it requires a deep understanding of the Constitution and the principles of federalism.

Finally, one of the most important issues in constitutional interpretation is the question of individual rights. The Constitution guarantees certain rights to all citizens, and it is the duty of the courts to protect these rights against government interference. This has led to many landmark decisions, and it is a central part of the constitutional process. The courts must be able to identify and protect these rights in a way that is consistent with the Constitution and the values of the nation.

In conclusion, the challenge of constitutional interpretation is a complex and ongoing one. It requires a deep understanding of the Constitution and the principles of federalism, and it requires a willingness to engage in thoughtful and respectful debate. The courts play a central role in this process, and it is their duty to ensure that the Constitution remains a living and breathing document, one that can adapt to the needs and circumstances of the nation over time.

The Constitution is the foundation of our nation, and its interpretation is a task of great importance. We must all work together to ensure that it remains a source of strength and guidance for all generations to come.

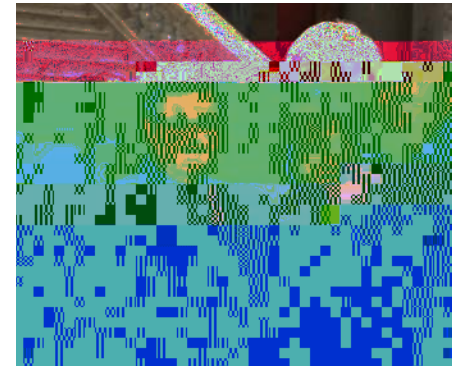
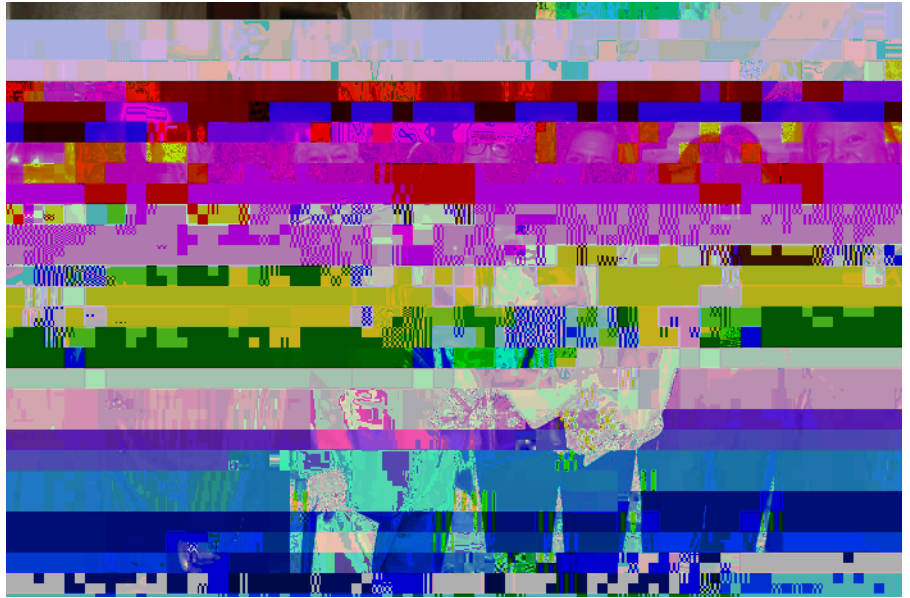
Named Outstanding Chase Alumna by
NKU Alumni Association

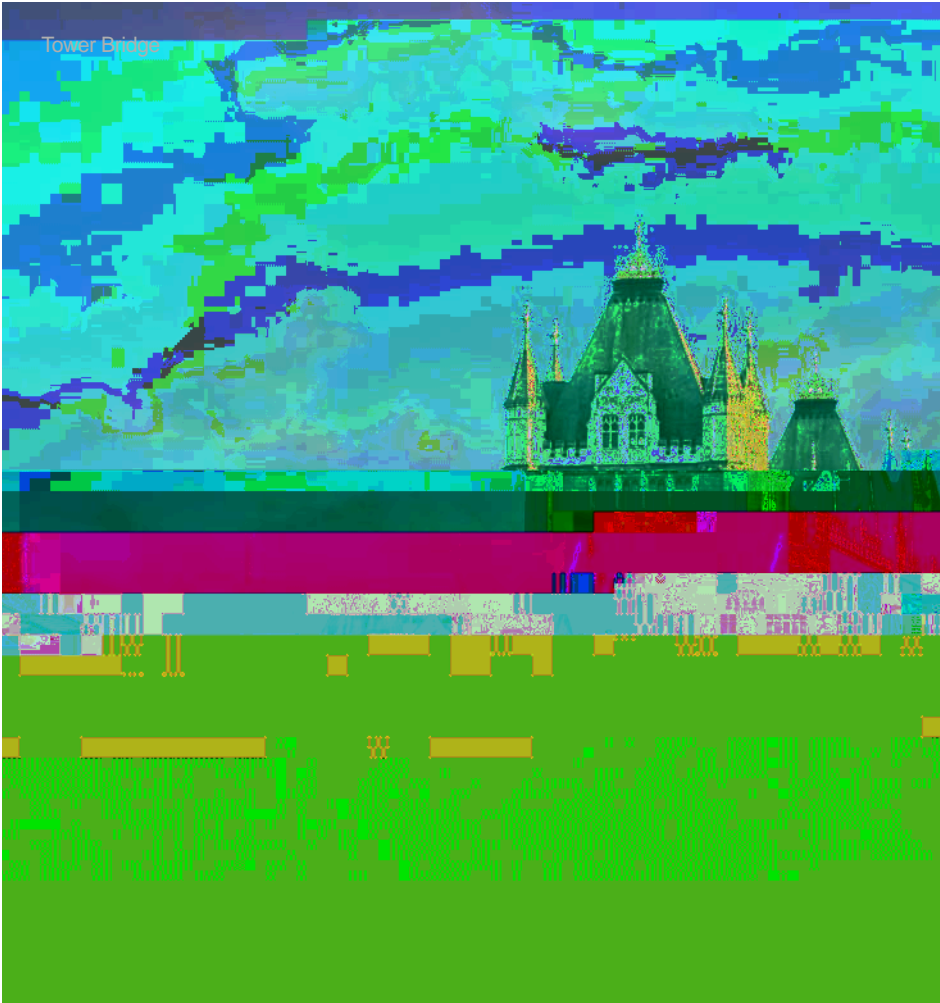
The Honorable Michelle M. Keller '90

Chase College of Law's first Justice on the Supreme Court of Kentucky

On August 3, 2013, the Supreme Court of Kentucky announced its decision in *Commonwealth ex rel. B. B. v. Commonwealth ex rel. C. C.*, a case that was argued before the court on June 14, 2013. The court's decision was a landmark one for Chase College of Law, as it was the first time that a Justice on the Supreme Court of Kentucky was a graduate of Chase College of Law. Justice Michelle M. Keller '90 was appointed to the court in 2011 and has since then been a prominent member of the court. Justice Keller is a member of the Kentucky Bar Association and the American Bar Association. She is also a member of the Chase College of Law's Advisory Board. Justice Keller is a graduate of Chase College of Law and received her Bachelor of Science degree from the University of Kentucky in 1990. She received her Juris Doctor degree from Chase College of Law in 1993. Justice Keller is currently a Justice on the Supreme Court of Kentucky. She is also a member of the Kentucky Bar Association and the American Bar Association. She is also a member of the Chase College of Law's Advisory Board. Justice Keller is a graduate of Chase College of Law and received her Bachelor of Science degree from the University of Kentucky in 1990. She received her Juris Doctor degree from Chase College of Law in 1993. Justice Keller is currently a Justice on the Supreme Court of Kentucky. She is also a member of the Kentucky Bar Association and the American Bar Association. She is also a member of the Chase College of Law's Advisory Board.

a
C A a , a
a a C ,
a a a , a
J a a a , a
a a , a a 79 a ,
a a a a . a .
a , a a a
J a a a a ,
J a a B a a a .
a a a a
a , a a a ,
a a a a
a a a J a
a a - a a , a
a a a a a
a a a a a
a a a a a
J a a a
4 a a J a
a a





... B ...
A ... a ' Ca ... a ,
B ... a , Ba ... ,
... J ... a ...
... a ...
... a ...
... a ... a . A ...
... a a ...
a , a ... a ... *The*
Magistrate. ... a ...
a a a , a ... a ...
a ... a ... C ... a ...
B ... a ... a ...
... a ...
... a ... , a ...
a ... a IOO- ...
... a ...
... B ... a ... a .
a ... a ...
a ... a ...
a ... a ... , a ...
... a ...
... ■



Stonehenge



Scotland Yard

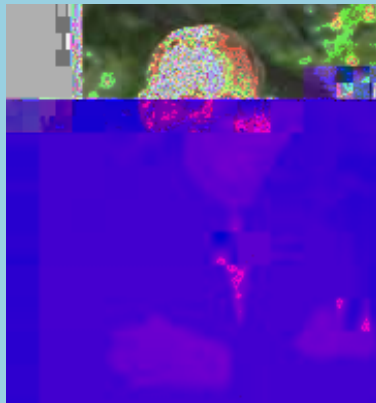


Riley and Morhard talk about career

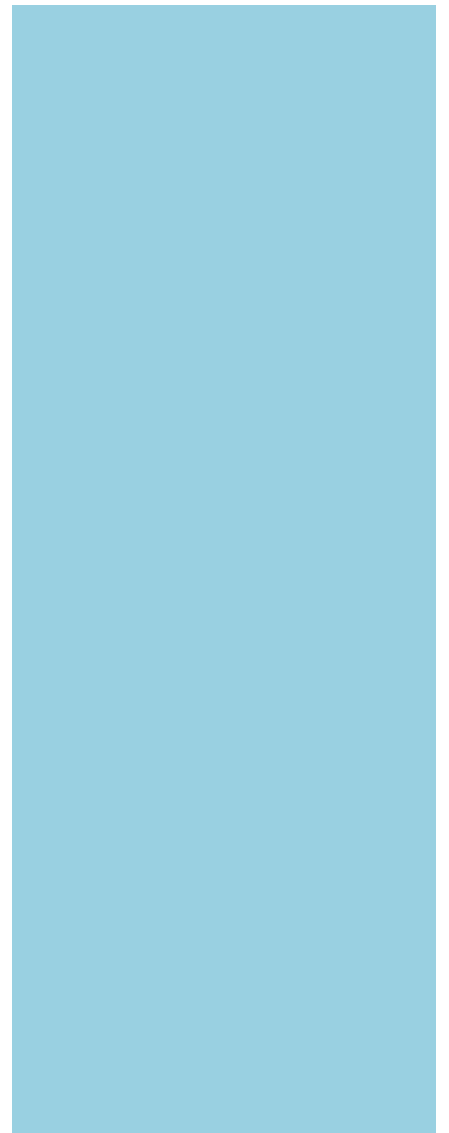


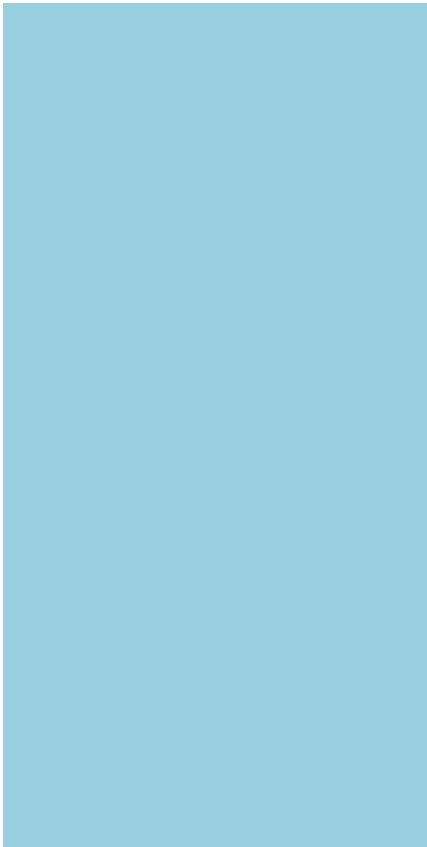
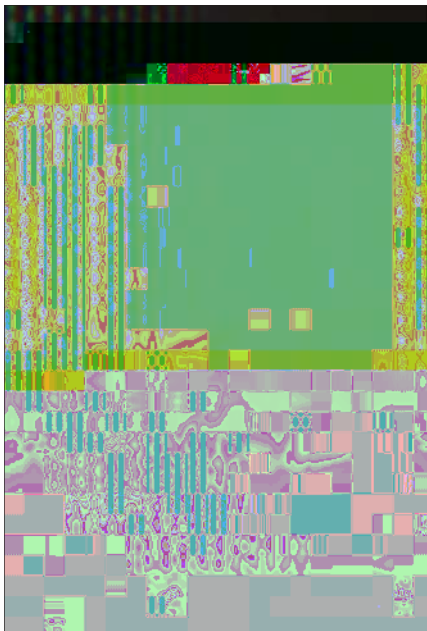
active at Chase. He serves on the Dean's Cabinet, is a founding partner and member of the board of advisors of the Transactional Law Practice Center and, in memory of his grandfather, established the Heman H. McGuire Endowed Scholarship for Chase students from Eastern Kentucky.

Riley is married to the former Michele-Anne Ebe, and the proud father of three children, Mary-Catherine, Thomas, and Anne-Marie (deceased). He resides with his family in Arlington, Virginia.



JAMES W. MORHARD is principal of the law firm of Morhard and Associates, LLC, a government affairs consulting firm. He has a long and varied background in government service, ranging from working as an analyst for the Secretary of the Navy and the Navy Comptroller in the Pentagon to serving as the Chief of Staff of the Senate Appropriations Committee. He is an adjunct professor at the Naval Post Graduate School, a member of the board of Saint Francis University, and a member of the advisory board for the U.S. Institute of Peace.



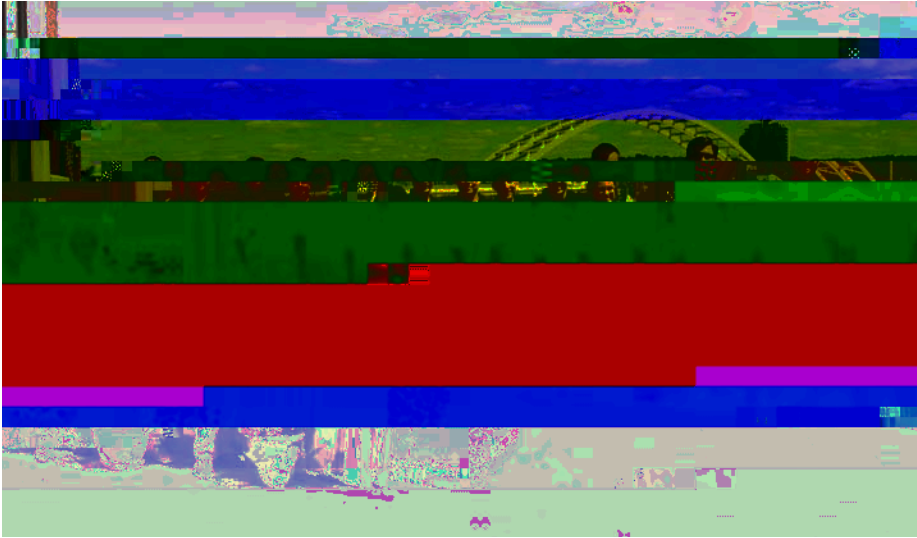




Transactional Law Practice Center

Students Excel at Business Boot Camp

Fourteen NKU Chase College of Law students survived a week of boot camp - Business Boot Camp that is. Business Boot Camp is an intense, "ve-day program that helps law students and recently admitted attorneys learn important business skills necessary for the practice of law. Most areas of law require lawyers to have a working knowledge of business basics. While some law students might assume business skills are applicable only to transactional work, litigators need to know how to follow the money and understand why business deals go awry. In fact, NKU Chase Law + Informatics Institute Director, Jon Garon, commented,



Na, a 2013-14,
a
B a
A a 20 A
a
A, AA
A, A B a C a
a a a C
a a a a a
a a a
a C a C a
B a



Jennifer Kreder

Lessons for Religious Liberty Litigation from Kentucky, A & C.

(. 2013).

Restitution in the Information Age, CA
C A (. 2013).

Anticipating Prosecution of the Gardner Heist, 17 CA A A C . 47 (2013) ().

Fighting Corruption of the Historical



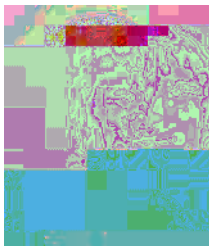
John Valauri

Baffled by Inactivity: the Individual Mandate and the Commerce Power; 10 *Ill. J. L. & Soc. Pol.* 51 (2012).

Originalism and the Necessary and Proper Clause, Loyola Constitutional Law Colloquium, Loyola University Chicago School of Law, Chicago, IL (November 2012).

2-3-971 8 1 34-55 355 -3-97 (

7(278()22()-1 a3()- (a)-5 (



Barbara Wagner

Pending Changes in Federal Securities Laws Will Permit Small Businesses to Raise Funds Online; 10 *Ill. J. L. & Soc. Pol.* (2013).

Alumni Relations, 10 Ill. J. L. & Soc. Pol. (2013).

Retaining Talent in the Region and Graduate Employability, 10 Ill. J. L. & Soc. Pol. (2013).

Regional Alumni Associations, 10 Ill. J. L. & Soc. Pol. (2013).

Shared Interest Groups, 10 Ill. J. L. & Soc. Pol. (2013).

Volunteer Leadership, 10 Ill. J. L. & Soc. Pol. (2013).

Beyond the Four Corners of the Rules: Professionalism and the Business Lawyer, ABA B

ALUMNI & FRIENDS

YOUR GUIDE TO GIVING IN SUPPORT OF CHASE

As a result of the 2017 Tax Reform Act, the annual gift tax exclusion has increased from \$14,000 to \$15,000. This means that you can now give up to \$15,000 per year to any number of recipients without incurring any gift tax. This is a great opportunity to give to your favorite charities and support your favorite causes.

LIFE EVENT:
You decide to reinvest low-yielding assets for a secure retirement income stream.

GIFT MOTIVATION:

- ▶ You have a large portfolio of low-yielding assets that you want to reinvest for a secure retirement income stream.
- ▶ You want to support your favorite charities and causes.
- ▶ You want to take advantage of the increased annual gift tax exclusion.
- ▶ You want to reduce your taxable estate.

A GIFT STRATEGY TO CONSIDER: Charitable Gift Annuity

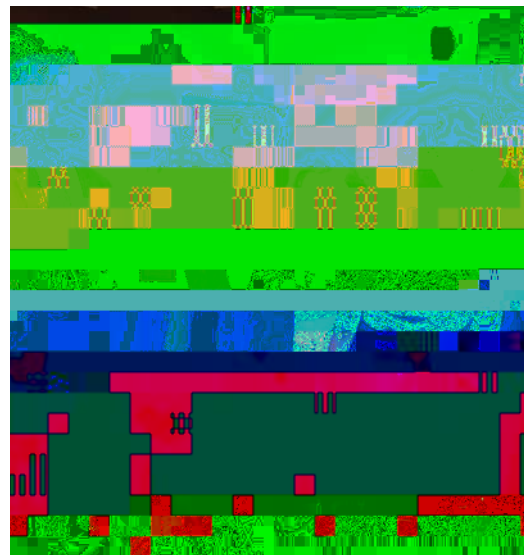
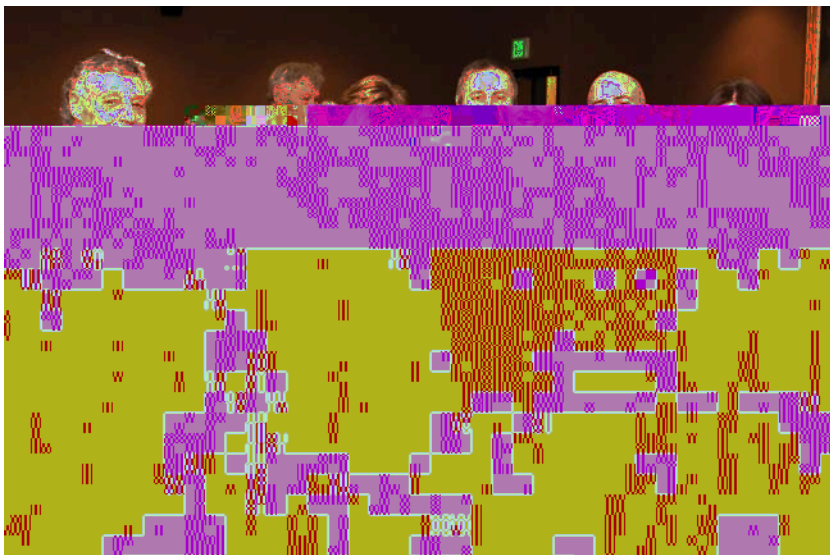
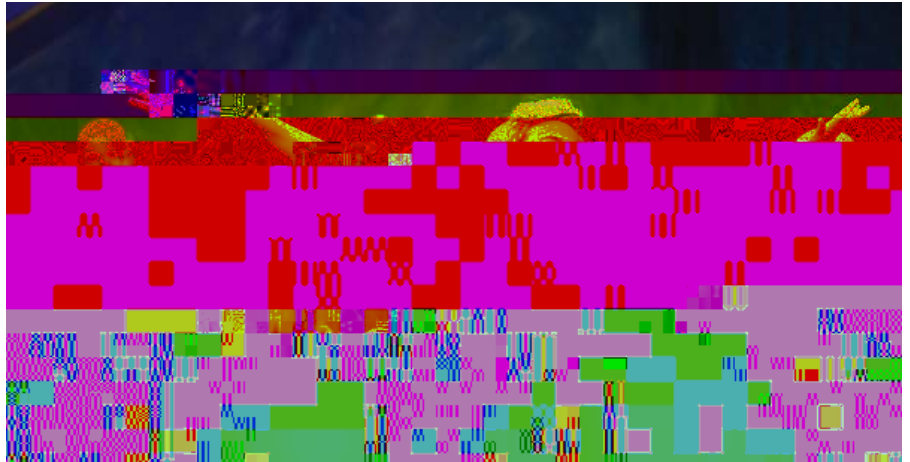
A Charitable Gift Annuity (CGA) is a gift of cash or securities to a charity that provides you with a fixed annual payment for life or for a term of years. The annual payment is based on the value of the gift and the rate you select. The CGA is a great way to support your favorite charities and causes while also providing you with a secure retirement income stream.

BENEFITS SUMMARY:

- ▶ You can give up to \$15,000 per year to any number of recipients without incurring any gift tax.
- ▶ You can receive a fixed annual payment for life or for a term of years.
- ▶ The annual payment is based on the value of the gift and the rate you select.
- ▶ The CGA is a great way to support your favorite charities and causes while also providing you with a secure retirement income stream.

Dean's Circle Theater Party features Legally Blonde, the Musical

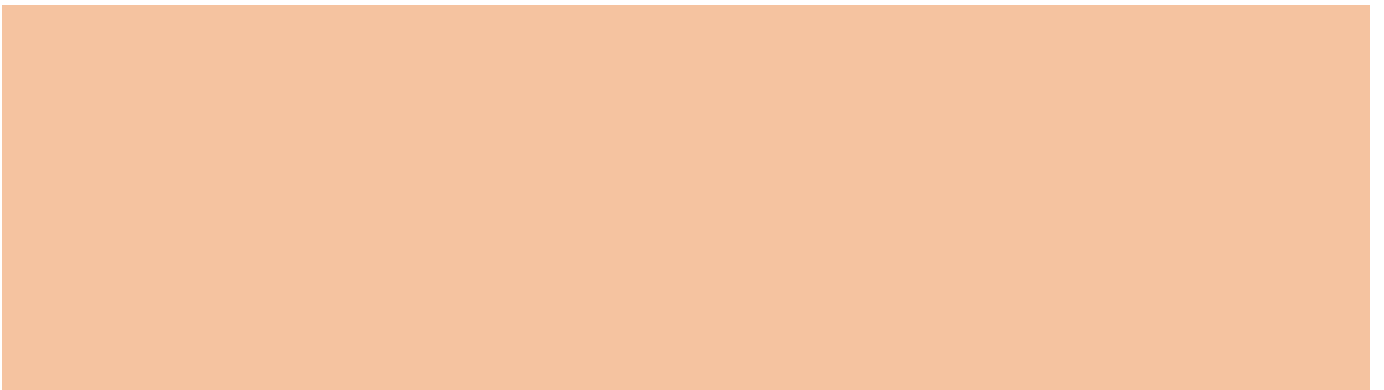
Chase alumni and friends gathered on March 2, 2013 for the Dean's Circle Theatre Party. Members of the Dean's Circle and Chase's leadership boards attended a reception on campus followed by the NKU Theatre Department's performance of Legally Blonde, the Musical in the NKU Corbett Theatre. Last year, the group attended the Theatre Department's performance of To Kill a Mockingbird. Donors of \$1,000 or more annually enjoy periodic Dean's Circle recognition events. Other past activities include an evening at Elk Creek Winery and a special welcome reception for new NKU president Geoffrey Mearns.





ALUMNI & FRIENDS

PROFILES IN GIVING



2012-2013 Honor Roll of Donors

CHASE LIFETIME GIFTS

W. JACK GROSSE SOCIETY \$1,000,000 & ABOVE

C a C a
B J a
a a TM

FREDERICK L. HOFFMAN SOCIETY \$500,000 TO \$999,999

a

HARRY T. KLEIN SOCIETY \$100,000 TO \$499,999

a TM Ba TM
C
A. Pa TM
a a
a a -A
a a &
A a, J TM

ARTHUR J. SCHUH SOCIETY \$50,000 TO \$99,999

A a,
Ba a a
Ba a
A B, C
A TM B
a TM
C a & a
a a Ca
A a C
a B Ba

\$25,000 TO \$49,999

a A
A A.
Ba & Ba .C.
a a
C a C
a Ca
a a
a a
a Ba a,
a a a

\$10,000 TO \$24,999

a A a
A a Ba a
A a, Ca
Ba a a a B
B a a B,
B a, Z, .C.
C B. Ca
C a Ba A a
J A a
a C
C a C J TM
a Ca a Pa
Ca a Ca a
a a a a
B a
a
a A.
A C a
a & a
a a J a
a & a
J a J a
J a a
A a a a a
a a a a

a a
a a
Ca B. a a
a a a J TM
J a J a B.
C a a TM
a a TM
B 8.5 0 0 8.5 363.1805 510.6461 C 6 .25882 .46275 .61176 4



a
a
Ca Z

CLASS OF 1976
a A.C

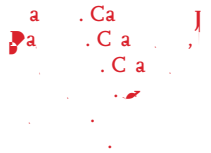
CLASS OF 1992



Chase gave me an outstanding legal education at a truly affordable price . . . Just as Chase prepared me for a legal career, I want to help prepare future generations of NKU Chase lawyers.

„ David Crawford •93

CLASS OF 1993



CLASS 1994



CLASS OF 1995





general litigation with a concentration in
public and private Employment Law, state





Brittney F. Fritz has joined The Law Practice of Dennison Keller, LLC as an associate. The firm specializes in elder law, including medicaid planning, probate,

